

## Vernier Height Gauge 190 Series

### Features

Standard: Factory Standard

- Zero reference point can be adjusted for calibration
- Beam and slide made of hardened stainless steel
- Measuring faces are micro-lapped for high accuracy
- Chrome plated scale
- Super solid heavy base for greater stability and rigidity
- Carbide tipped scriber



### VERNIER HEIGHT GAUGE

Code No	Range	Resolution	Base
MW190-20*	0-200mm	0.02mm	110x65mm
MW190-30	0-300mm	0.02mm	125x85mm
MW190-50	0-500mm	0.02mm	170x110mm
MW190-60	0-600mm	0.02mm	180x120mm
MW190-75	0-1000mm	0.02mm	250x150mm

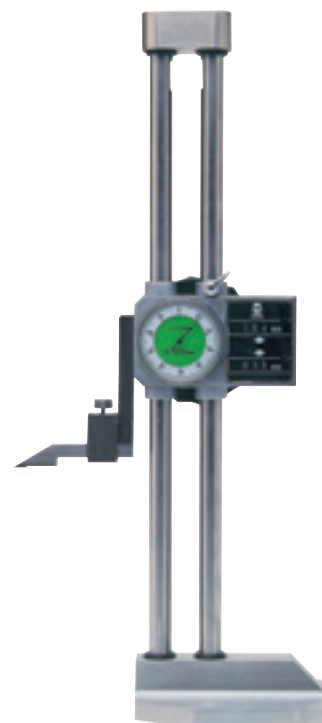
\* 190-20, not adjustable, without magnifier glass

## Double Column Height Gauge 195 Series

### Features

Standard: Factory Standard

- Double column indicator height gauge
- Features dual directional digital counters and a dial indicator for fast and error free measurements
- Provided with a hand feed wheel for easy up and down feeding
- The digital counters can be set to zero at any position
- The double column combines high stability with absolute accuracy
- With carbide tipped scriber
- The counter reads steps of 1mm



### DOUBLE COLUMN HEIGHT GAUGE

Code No	Range	Resolution	Base
MW195-30	0-300mm	0.01mm	125x85mm
MW195-50	0-600mm	0.01mm	180x120mm

## Digitronic Mini Height Gauge 192 Series

### Features

- Large LCD display
- Solid aluminium alloy base with magnets
- Hardened stainless steel beam
- Measuring range: 0-6" / 0-150mm
- Reading: inch/metric/fractional
- IP54 water, dust and oil resistant
- ABS, HOLD and power saving functions



### DIGITRONIC MINI HEIGHT GAUGE

Code No	Range	Accuracy
MW192-20D	0-150mm / 0-6"	0.0015"

## Digitronic Height Gauge 190 Series

### Features

Standard: Factory Standard

- Features easy to read digital display
- Modern design
- 'Soft keys' for maximum operating comfort
- Ground micro-lapped measuring surfaces
- Functions: mm/inch conversion, on/off, data-output, zero-setting, max, min, hold, battery low indication



### DIGITRONIC HEIGHT GAUGE

Code No	Range	Resolution	Base
MW190-20DBL	0-200mm / 0-8"	0.01mm / 0.0005"	110x65mm
MW190-30DBL	0-300mm / 0-12"	0.01mm / 0.0005"	125x85mm
MW190-50DBL	0-500mm / 0-20"	0.01mm / 0.0005"	150x110mm
MW190-60DBL	0-600mm / 0-24"	0.01mm / 0.0005"	150x110mm
MWY-100/02	Data cable		
MWY-100/08	Interface		
MWY-100/12	Software		

## Digitronic Height Gauge 191 Series

### Features

- Heavy duty beam
- Handwheel for ease of use
- ABS/INC measurement
- Large LCD display
- Inch/mm conversion
- Positive lock carbide scriber
- Supplied in moulded case



### DIGITRONIC HEIGHT GAUGE

Code No	Range	Resolution
MW191-30DAB	0-300mm / 0-12"	0.01mm / 0.0005"
MW191-60DAB	0-600mm / 0-24"	0.01mm / 0.0005"

## Digitronic Double Column Height Gauge 195 Series

### Features

Standard: Factory Standard

- Double column indicator height gauge
- Provided with a hand feed wheel for easy up and down feeding
- The double column combines high stability with absolute accuracy
- With carbide tipped scriber
- Features large 7.5mm height, digital display
- Solid design
- 'Soft keys' for maximum operating comfort
- Ground micro-lapped measuring surfaces
- Functions: mm/inch conversion, on/off, data-output, zero-setting, max, min, battery low indication



### DIGITRONIC DOUBLE COLUMN HEIGHT GAUGE

Code No	Range	Resolution	Base
MW195-30DDL	0-300mm / 0-12"	0.01mm / 0.0005"	125x85mm
MW195-60DDL	0-600mm / 0-24"	0.01mm / 0.0005"	180x120mm